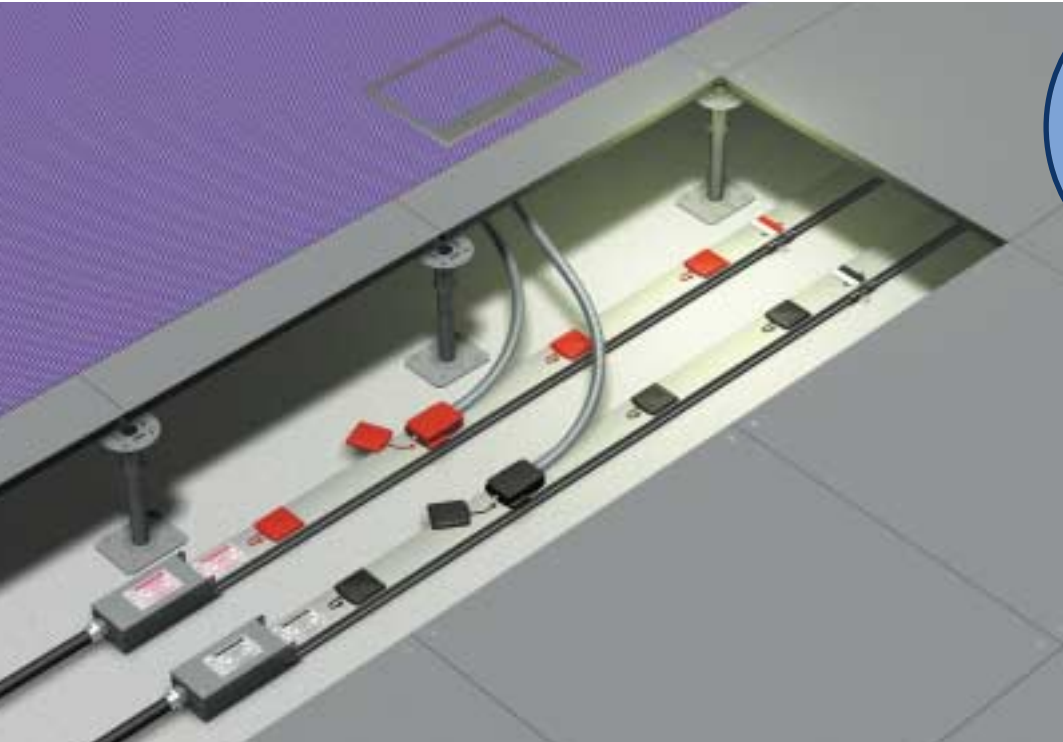


UNDERFLOOR POWERTRACK



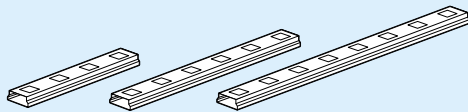
FEATURES

Simple and quick to install with colour coding and 'key' systems for instant identification of polarity

- Standard (3 busbar) and clean Earth/Low Noise (4 busbar) systems, colour coded and with non-interchangeable tap-off units.
- Flexibility, convenience and safety of shuttered outlets at 300mm intervals.
- Retained dust covers provide protection for outlets when not in service.
- Choice of 32 amp unfused and 13 amp fused tap-off units incorporating LSF cables as standard. 16amp fused tap-offs also available.
- Tap-off units have positive latching to prevent accidental removal.
- Colour-coded 63 amp/250 volt rated systems - simple & quick to install.
- Conforms to BS 7671:2001 (section 607)
- Track Interconnector complete with fixing bracket.

TRUNKING ASSEMBLIES, FITTINGS AND COMPONENTS

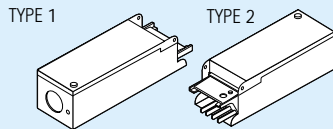
Power Track



Article No.	Description	Mita Ref	Packed
5200 010	● Standard 1200mm	PT 12S	1
5200 020	● Standard 1800mm	PT 18S	1
5200 030	● Standard 2400mm	PT 24S	1
5200 040	● Standard 3600mm	PT 36S	1
5200 015	● Clean Earth 1200mm	PT 12C	1
5200 025	● Clean Earth 1800mm	PT 18C	1
5200 035	● Clean Earth 2400mm	PT 24C	1
5200 045	● Clean Earth 3600mm	PT 36C	1

Feed Unit

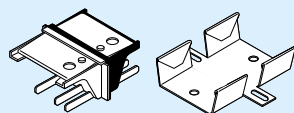
with integral fixings



Article No.	Description	Mita Ref	Packed
5200 100	● Standard Type 1	PTF 1S	1
5200 110	● Standard Type 2	PTS 2S	1
5200 105	● Clean Earth Type 1	PTF 1C	1
5200 115	● Clean Earth Type 2	PTF 2C	1

Track Interconnector

complete with fixings

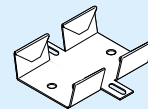


Article No.	Description	Mita Ref	Packed
5200 320	● Standard	PTIS	1
5200 325	● Clean Earth	PTIC	1

Track Fixing Bracket

Article No.
5200 300

Mita Ref Packed
PTFB 1

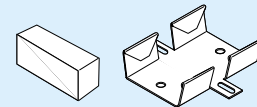


Track End Stop

complete with fixing bracket

Article No.
5200 360

Mita Ref Packed
PTS 3 1



Track Flexible Corner Unit

1 metre length

Article No. Description
5200 150 ● Standard
5200 155 ● Clean Earth

Mita Ref Packed
PTFCS 1
PTFCC 1



Tap Off Units

Article No.	Description	Mita Ref	Packed
5200 200	Standard 32A unfused ● 3 metre	PTT 32S	1
5200 210	Standard 13A fused ● 5 metre	PTT 13S	1
5200 205	Clean Earth 32A unfused ● 3 metre	PTT 32C	1
5200 215	Clean Earth 13A fused ● 5 metre	PTT 13C	1



● = Standard ● = Clean Earth

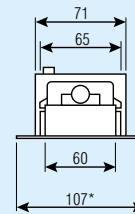
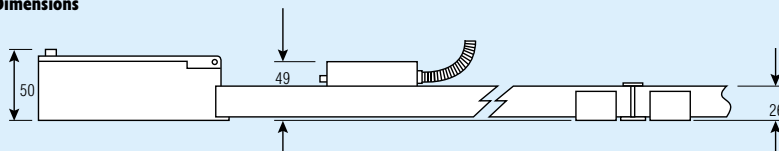
Underfloor Powertrack provides a convenient and flexible solution for power distribution in premises where raised access floors have been installed.

Based on a series of single phase 63 amp rated fully-enclosed busbar units, the system incorporates many design features, making installation quick and easy. The system compliments the range of floor outlet grommets and boxes.

Floor outlet boxes are available pre-wired and tested prior to delivery to site.

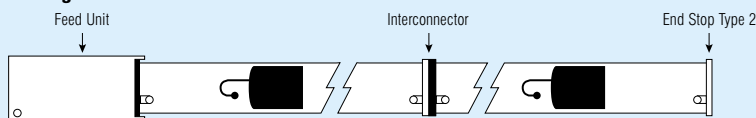


Dimensions



*134 at Feed Unit

Track Arrangements



▶ TECHNICAL DATA

- Rated Current..... 63 Amp
- Rated Voltage..... 250 Volt
- Tested to...BS EN 60439-2 : 1993
- ASTA Certificate..... No. 12918
- Complies with..... BS 7671 : 2001
- Degree of protection..... IP 4X
- Feed unit cable capacity..... 16mm²

See Technical Section for full technical specification